

Welcome to



...Where life's adventures begin





## Contact details

Little Explorers Nursery & Pre-School

Chorley Business and Technology Centre

Euxton Lane

Chorley

PR7 6TE

Telephone: 01257 246040

Email: [info@littleexplorers.me.uk](mailto:info@littleexplorers.me.uk)

Website: [www.littleexplorers.me.uk](http://www.littleexplorers.me.uk)



**Facebook:** little explorers nursery & pre-school

## **Welcome to Little Explorers**

Thank you for your interest in our nursery. We hope you find this information helpful. Please do not hesitate to contact us if you have any queries.

We operate an 'open door' policy which means that you are welcome to come and look around at anytime, during opening hours. No appointment is necessary.

### **A little bit about our wonderful nursery**

Little Explorers Nursery & Pre-School opened in April 2013. We are situated on Chorley Business and Technology Centre, just off Euxton Lane, Chorley. The nursery is registered to care for children from birth up to 5 years old.

We are open 52 weeks a year, closing only on Bank Holidays. We operate Monday - Friday from 7.30am to 6.00pm offering morning and afternoon sessions as well as full day care. We also accept 2, 3 and 4 year old funding.

We are registered with Ofsted and are currently graded as 'Good' in all areas. (February 2018). You can read a copy of our full inspection report at:

<https://reports.ofsted.gov.uk/inspection-reports/find-inspection-report/provider/CARE/EY539307>

We are proud of our nursery and strive to provide the highest standards of care and early year's education. Our staff, led by an experienced Management Team, are highly skilled and qualified and put our children at the heart of all they do.

Our nursery motto is, 'Achieve and succeed, together we are a family.' This underpins our ethos which embraces all of our children, staff and extended families being part of the Little Explorers family, supporting each other to have high aspirations and sharing success and achievements, no matter how big or small.

## Meet the Little Explorers Team



### **Nicky Norton, Nursery Manager**

**Qualifications:** NNEB, Foundation Degree Early Years Leadership, BA (Hons) First Class Early Years Leadership, Early Years Professional Status.

I have over 30 years' experience in childcare. I have worked as a Nursery Manager, Early Years Consultant and an Ofsted Inspector and have also owned my own nursery. I joined Little Explorers in February 2018, and I am passionate about providing outstanding, quality childcare and education for all our babies and children. I am committed to working in partnership with parents to ensure that all our children receive the very best start on their learning journey.



### **Amanda Pemberton, Deputy Manager**

**Qualifications:** BTec Level 3 Children's Learning & Development

I have worked at Little Explorers since August 2013, having started as an Early Years Practitioner. I have worked as a Room Leader in all the nursery rooms. In my current role as Deputy Manager, I am responsible for supporting the Nursery Manager to ensure we provide the very best provision for our children and families.



### **Alex Murtagh, Early Years Teacher & SENCO**

**Qualifications:** BA (Hons) Primary Education: Early Years, Early Years Teacher Status

In my role as teacher, I oversee the curriculum and lead Phonics and number sessions, focussed group activities and small intervention groups. When children leave Little Explorers, they are well equipped for their transition into Primary education. I love working in a team and have been at Little Explorers since February 2016. I liaise with all our local feeder schools to promote school readiness and ensure a smooth transition to primary school for our children. I am also the nursery SENCO, and I am happy to provide any support or advice to you and your family should you have any concerns over your child's development.

## **Linda McCann, Finance / Admin**



I have worked at Little Explorers since 2016. I work 2 days a week at nursery: Monday and Thursday. My job is to oversee the finance, including fees and funding. Please do not hesitate to contact me if you need any help.

The senior management team are supported by experienced and skilled Room Managers, Early Years Practitioners, and a cook.

# Our Nursery Rooms

## Caterpillars

The Caterpillar room is specially designed for our youngest babies. The room is safe and secure with a quiet and tranquil atmosphere. The room is well equipped with up to date resources. Our caring staff are well qualified and work together with parents developing a trusting partnership.



Your baby will be allocated a key person who will work around their individual needs and routines and ensure the transition from home to nursery is a smooth one. We have a dedicated sleep area and several cosy areas for the children to sleep when needed. All babies have their own care plan, completed by you and the key person, and updated regularly. Each parent is given full breakdown on collection of what their child has experienced throughout the day. The contentment and happiness of your baby is paramount.



## Butterflies

When children are 18 months old, they move into the Butterflies room. This large, spacious environment provides opportunities for toddlers to be creative and messy as well as develop their physical skills as they start to climb, walk, and run! As our toddlers gain more confidence with walking and talking, they are encouraged to become a little more independent. Daily access to the nursery garden is provided in all weathers. Children also experience short walks within the local community.

A strong focus in Butterflies room is supporting children's communication and language development. With this in mind, the staff provide a language rich, play-based curriculum which includes lots of opportunities for children to sing, chat, share stories together and copy sounds.





## Ladybirds

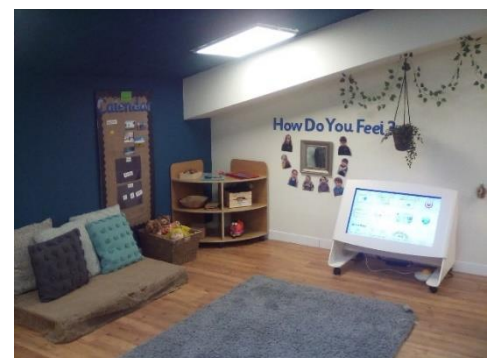
This room are specifically designed for our 2.5 year olds and three year olds. With areas to build, share stories, use their imaginations and be creative and messy, children are encouraged to develop their independence and confidence. The Ladybird's room has direct access to the outdoor play area and our 'indoor/outdoor' policy means children can choose where they play throughout each session.

The daily routine Ladybirds is slightly more structured than those in the younger rooms. Small group times encourage children to sit together for short times to listen to stories, join in with singing and rhyme times or play small games together. This helps develop concentration, sharing and turn taking.



## Pre-School

Our Pre-School room is run by a qualified Early Years Teacher who oversees the teaching and learning and a Room leader who takes lead on the day to day running of the room. The nursery day is structured, with a strong emphasis on play, but also includes opportunities for children to develop skills in numeracy and letters and sounds. Throughout their Pre-School year, we provide children with a diverse range of experiences and activities which will challenge and inspire them and prepare them for the transition to 'big school.'





## The Great Outdoors

We have 2 wonderful outdoor areas, specially designed to challenge, and ignite children's sense of adventure and support their development. Our 0-2's area provides a safe base for babies and toddlers to explore. There is room to crawl, toddle, climb and run as well as a variety of equipment and natural resources to play with.

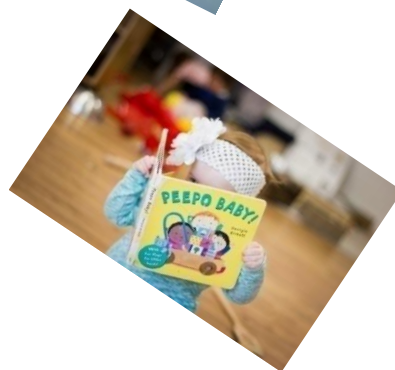
The larger play space is ideal for 2-4-year-olds as it offers a range of more challenging equipment as well opportunities to indulge in imaginary play, large physical activities, quiet areas to read and relax and natural play spaces to enjoy.



# The Early Years Foundation Stage

The nursery follows the Early Years Foundation Stage curriculum. We provide a diverse range of activities and experiences which are based on children's current interests and will support and encourage their development in all 7 areas of this curriculum. Your child's key person will provide you with regular updates, both written and verbal, of your child's progress during their time with us. We use online learning journals which your child's key person will update regularly with photographs, videos, and observations so you can see your child's progress first-hand.

When your child starts with us, we will provide you with information about the Early Years Foundation Stage and the areas of learning within it as well as a handy guide for you which explains what you can expect your child to be achieving.



## Additional Activities

Helena, from Musical Mischief joins our younger children in Caterpillars, Butterflies, Bumble Bees and Ladybirds every week to play instruments, dance, and sing. This is free of charge and is included in the weekly fees.

Weekly Spanish lessons for children in Pre-School are also available. \*

\*A small charge applies each term.



## Home Learning & Our Nursery Library

Every half term we will send home activity packs for you to share with your child. These activities will relate to developmental areas which your child will currently be working on in nursery.

We are part of the Lancashire 'We are Reading' initiative and, as such, reading, storytelling and sharing books is a focus for the whole nursery. We encourage all our children to borrow books from our library to take home and enjoy.



# Food, Glorious Food!



All the children's meals and snacks are freshly cooked each day by our Nursery Cook. We cater for all dietary requirements, allergies, and tastes. Please see our sample menu below. A vegetarian option is available each day. That days menu is display in the entrance foyer each morning. The Nursery Cook will work in partnership with parents to devise a weaning menu for babies.

	Monday	Tuesday	Wednesday	Thursday	Friday
<b>Breakfast</b>	Selection of cereal or toast 1, 2, 5, 7	Selection of cereal or toast 1, 2, 5, 7	Selection of cereal or toast 1, 2, 5, 7	Selection of cereal or toast 1, 2, 5, 7	Selection of cereal or toast 1, 2, 5, 7
<b>Snack</b>	Pancakes & Blueberries 1, 2, 5	Yoghurt 1, 5	Crudites & Dip 1, 3, 8	Muesli Flapjack 1, 2, 5	Breadsticks & Dip 1, 2, 3, 5, 8
<b>Lunch</b>	Chicken & Tarragon Casserole 2	Vegetable Lasagne 1, 2, 5	Chilli Con Carne with Rice	Sardine Spaghetti 2	Cowboy Pie 2, 5, 7
<b>Vegetarian Option</b>	Quorn Chicken & Tarragon Casserole 2	Vegetable Pasta 2	Quorn Chilli Con Carne with Rice	Vegetable Spaghetti 2	Quorn Sausage Pie 2, 7
<b>Pudding</b>	Yoghurt 1, 5	Artic Roll 1, 2, 5	Chocolate Chip Cookie 1, 2, 5	Rice Pudding 1	Jelly
<b>Snack</b>	Fresh Fruit	Fresh Fruit	Fresh Fruit	Fresh Fruit	Fresh Fruit
<b>Tea</b>	Homemade Soup & Bread Roll 2, 5, 7	Irish Stew 2	Macaroni Cheese & Cherry Tomatoes 1, 2	Baked Beans on Toast	Tomato & Garlic Linguine 2
<b>Vegetarian Option</b>	As above	Vegetable Stew 2	As above	As above	As above



## Our partnerships with parents

We pride ourselves on the relationships we forge with parents and carers. At the start of your child's time with us, we will ask you to share lots of information about them so we can ensure that we are able to meet their individual needs, to the very highest of standards. Throughout your child's learning journey at Little Explorers staff will work very closely with you and keep you informed of their progress through daily feedback, written reports as well as regular parent meetings. Our online learning journals provide you with observations, photographs and videos of milestones in your child's development. These are updated regularly by your child's key person.



We welcome parents, carers, and grandparents to join our parent committee. We meet once every half term to discuss future events, nursery policies, routines and share ideas.

## What makes Little Explorers so special?

- ✓ Fully qualified and experienced staff team
- ✓ Open Monday - Friday 730am - 6.00pm
- ✓ Full time, qualified Early Years Teacher
- ✓ Experienced Senior Management Team
- ✓ Vibrant and well-resourced indoor and outdoor environments
- ✓ Healthy & nutritious meals and snacks
- ✓ Extra curricula weekly sessions of Spanish, drama, yoga and music
- ✓ Safe and secure grounds

## Don't just take our word for it...

What our Parents say about Little Explorers:

*'My son goes here, and he loves it. He has come on a lot since starting. The staff are very friendly and approachable. We use Tapestry to keep in touch with regards to his learning and development which is great! We just hope he gets to go back for a few weeks before he starts school as he really misses his teachers and friends. Preschool has been very supportive during this time and have been setting us activities to try.'* (May 2020)

*'My son has been with Little Explorers from the start of his education. The staff have been outstanding, and we felt very confident leaving him there whilst i worked and my wife returned to work. The staff give excellent feedback every day about his activities, and they also encourage parent feedback and involvement with the nursery. Which makes you feel that you and your child/ren are very valued by the nursery. My son always smiles as we go through the gates each morning, which is enough proof for me that he enjoys his time here. The nursey staff know my son very well and have developed him to be a well-rounded child for his age of 3 years old. We're very grateful to the team at Little Explorers for all their time spent developing our son and helping to learn the key skills to perform at the expected level for a 3-year-old.'* (November 2022)

*'Reggie has been attending the nursery since he was 5 months old (he is now 4 and in preschool) and he is incredibly happy here. The nursery is a warm and friendly environment with professional and knowledgeable staff who are fully invested in the development of the children. Safeguarding is paramount and I have always felt secure in the knowledge that Reggie is well cared for in a safe space with well thought out processes and procedures which are followed by all staff and regular reminders and updates are sent to parents. Communication is excellent with a monthly newsletter providing information on staffing and their continued professional development, as well as information on upcoming events, learning themes of the month and information on developmental transitions supported by government links such as potty training and giving up the dummy which we found particularly helpful. The staff supported us through these stages by sharing books and helpful guidance, and even gave Reggie a certificate and gift when he gave up his dummy which was great! I am so glad we chose little explorers as I can see how happy he is and how much he is flourishing and being fully prepared for his next steps into school. The staff are extremely hardworking, dedicated and kind and I couldn't wish for a better nursery'* (November 2022)

*'Charlotte has been under your care for the last 3 and a half years and I have been extremely impressed with the care and support you have provided for her. You are able to cater for her needs and encourage her to develop independently. I have no doubt that she will be more than ready for school next year, and the wide and varied curriculum you offer has prepared her for this. All staff members are always friendly and helpful and share this ethos in each room.'* (November 2022)

What others have to say...

*'Children make good progress with their learning and development across the seven areas. This is due to staff having high expectations for children.'* (Ofsted 2022)



## Session Times & Fees

### 0-2 year olds

Full day 7.30am - 6.00pm (including all meals and snacks)	£62.00
Morning session 7.30am - 12.30pm (including breakfast, snack and lunch)	£39.50
Afternoon session 1.00pm - 6.00pm (including snack & tea)	£39.50
Full week Monday - Friday 7.30am - 6.00pm	£295.00

### Over 2's

Full day 7.30am - 6.00pm (including all meals and snacks)	£60.00
Morning session 7.30am - 12.30pm (including breakfast, snack and lunch)	£39.50
Afternoon session 1.00pm - 6.00pm (including snack & tea)	£39.50
Full week Monday -Friday 7.30am - 6.00pm	£285.00

**Meal charges** for children in receipt of 15/30 hour funding remain at £4.00 a meal or £6.00 for the full day

**Sibling discount** is 10% off the eldest child, if both children are fee paying. There is no sibling discount if either or both children are in receipt of funding.

To support parents/carers with childcare costs for children of all ages the Government introduced the Tax-Free Childcare scheme. You can open an online account which you can pay into to cover your cost of childcare, for every 80p you pay in the government will top up your account with an extra 20p. For those parents/carers with children aged 3 & 4 years the 30 hours childcare scheme is available. To find out more about these schemes and extra support with childcare costs please visit [www.childcarechoices.gov.uk](http://www.childcarechoices.gov.uk).

Funded sessions for 2, 3 and 4-year olds available. Top up fee and meals not included.

Fees can be paid by cash, card, bank transfer, and standing order, tax free childcare and childcare vouchers.

***Please note that any overpayments made by childcare vouchers and tax free childcare are non-refundable.***

## Over to you...

If you require any further information about Little Explorers or would like to book a place for your child, please contact Nicky, Senior Nursery Manager on 01257 246040 or email [info@littleexplorers.me.uk](mailto:info@littleexplorers.me.uk)

We look forward to welcoming your family to Little Explorers Nursery & Pre-School...where life's adventure begins.